

HMD



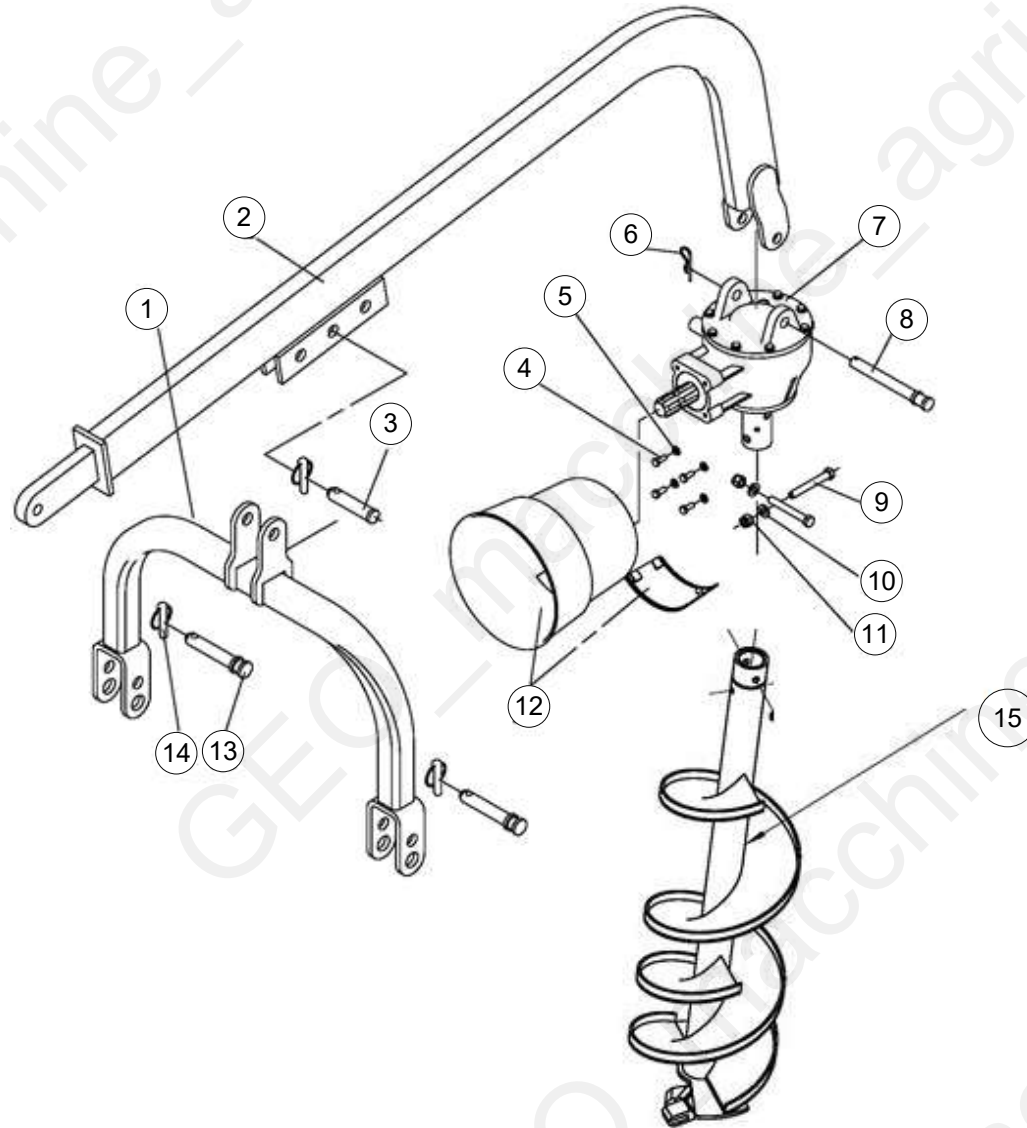
Table of Contents

Tavola	Page
HMD	3
HMD-L50	8
HMD-HL50	13

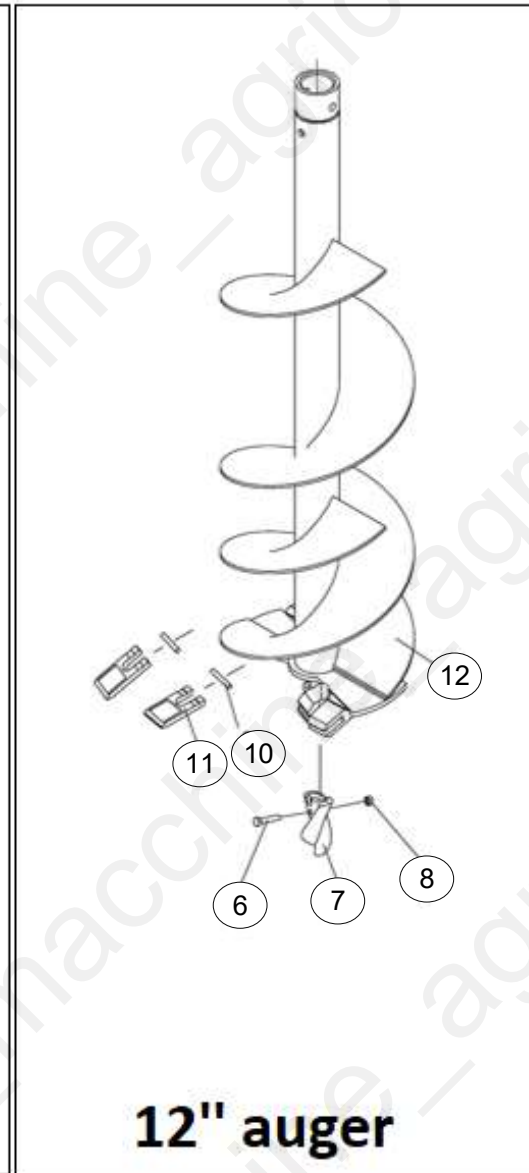
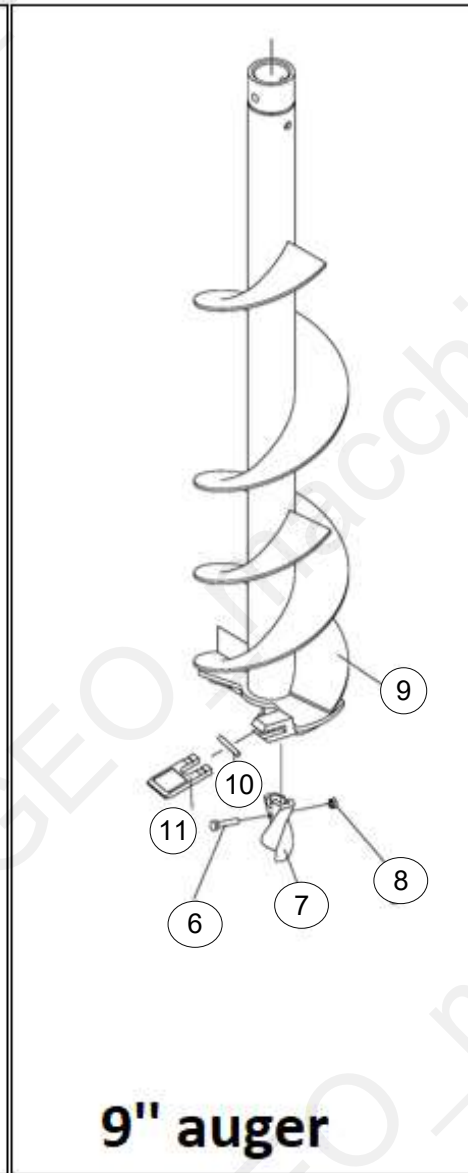
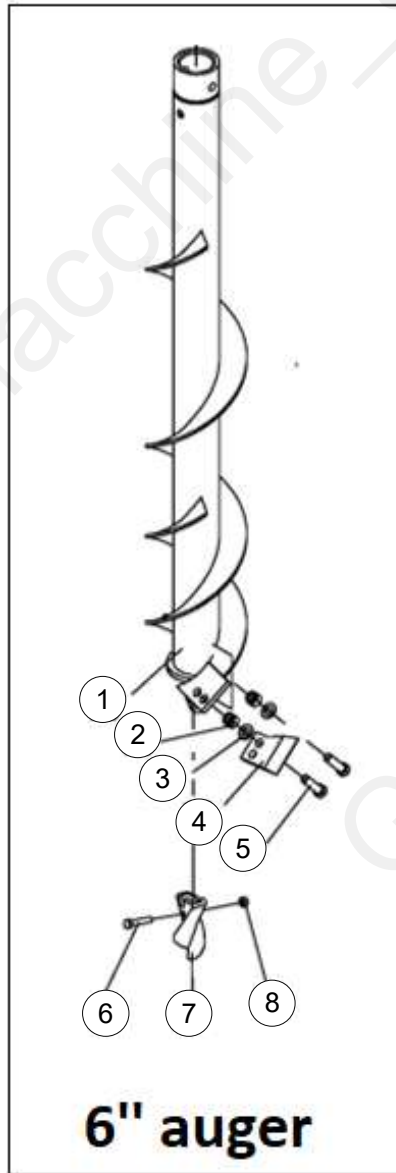
HMD



GEO Italy S.R.L.



Pos	Code	Description	NOTE	Q.
1	WX-S-01-001	suspension fork weldment		1
2	WX-S-02-001	frame weldment		1
3	WX-S-00-101	suspension fork upper pin		1
4	GB5783-M8X20	bolt M8X20		4
5	GB97.1-8	Plain washer 8		4
6	ZL-25.104	R pin		1
7	XH20.300J.12	Gearbox HMD		1
8	WX-HL-00-101	gear box lifting pin		1
9	GB5782-M12X90	Bolt M12x90		2
10	GB97.1-12	plain washer 12		2
11	DIN985-M12	nut M12		2
12	WX-HL-13-001	PTO protect hood		1
13	RB-00.102	upper suspension pin		2
14	200.56.011	Lock pin		3
15	WX-HL-04-001.12	12" auger		1
15	WX-HL-04-001.6	6" auger		1
15	WX-HL-04-001.9	9" auger		1



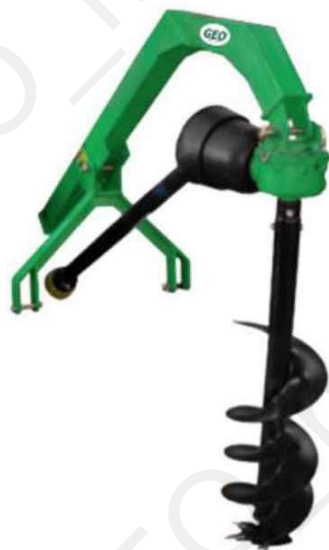
Machine: HMD

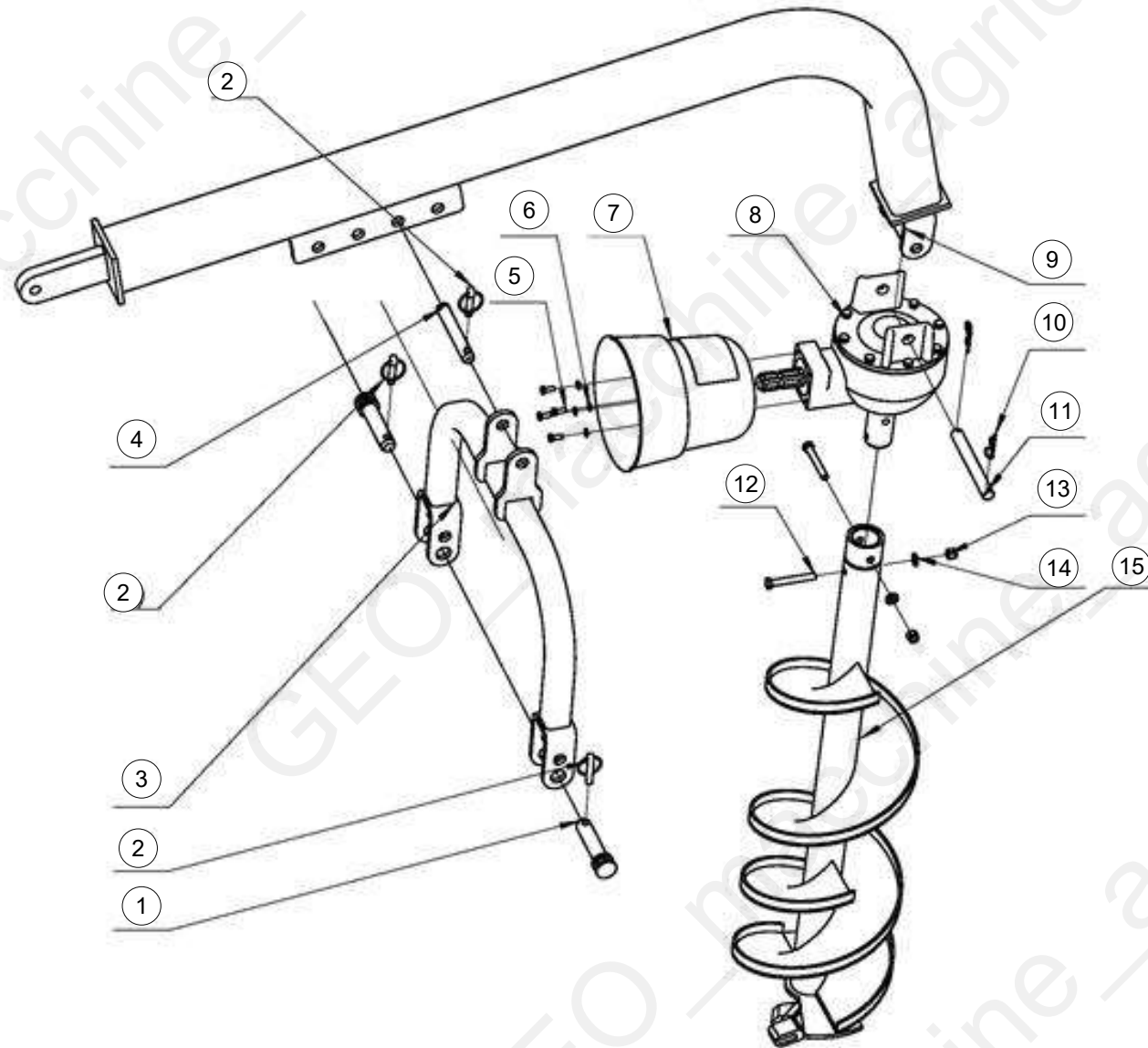
Assembly: Augers



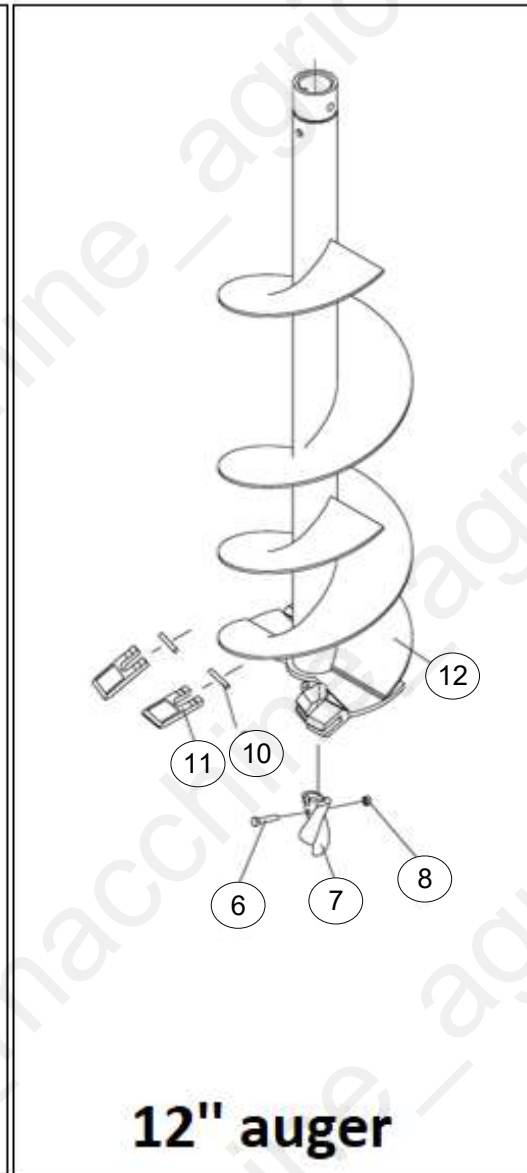
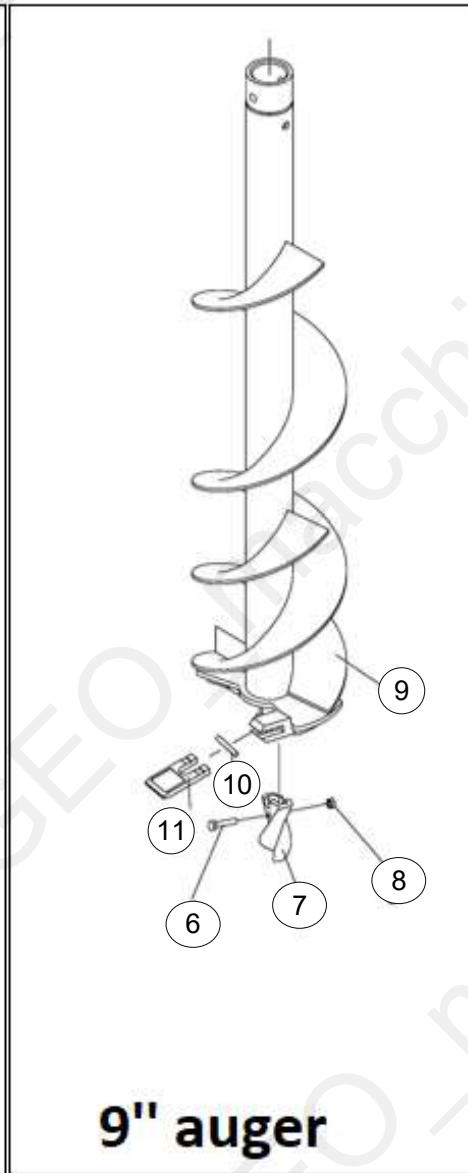
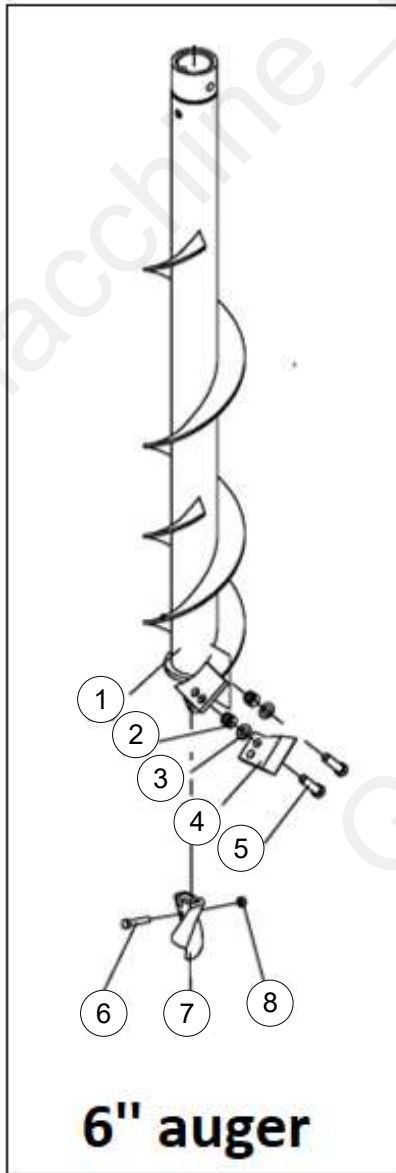
Pos	Code	Description	NOTE	Q.
1	WX-HL-02-001	6" auger weldment		1
2	DIN985-M12	nut M12		4
3	GB97.1-12	plain washer 12		4
4	WX-HL-00-109	6" auger blade		2
5	GB5783-M12X40	bolt M12x40		4
6	GB5783-M8X35	bolt M8x35		1
7	WX-HL-00-108	auger teeth		1
8	DIN985-M8	nut M8		1
9	WX-HL-03-001	9" auger weldment		1
10	WX-HL-00-107	loosing bar		2
11	WX-HL-00-106	blade		2
12	WX-HL-04-001.12	12" auger		1

HMD-L50





Pos	Code	Description	NOTE	Q.
1	RB-00.102	upper suspension pin		2
2	200.56.011	Lock pin		3
3	WX-L-03-001	suspension fork weldment		1
4	WX-L-00-101	suspension fork upper pin		1
5	GB/T.5783.M8.x.20	M8 x 20 Hexagon bolt		4
6	GB/T.97.1.8	Plain washer 8		4
7	WX-HL-13-001	PTO protect hood		1
8	WX-HL-09-001	Gearbox HMDL		1
9	WX-L-02-001	50 frame		1
10	ZL-25.104	R pin		2
11	WX-HL50-00-101	gear box pin		1
12	GB/T.5782.M12.x.90	Bolt M12X90		2
13	GB/T.889.1.M12	Locknut M12		2
14	GB/T.97.1.12	Plain washer 12		2
15	WX-HL-04-001.12	12" auger		1
15	WX-HL-04-001.6	6" auger		1
15	WX-HL-04-001.9	9" auger		1



Machine: HMD-L50

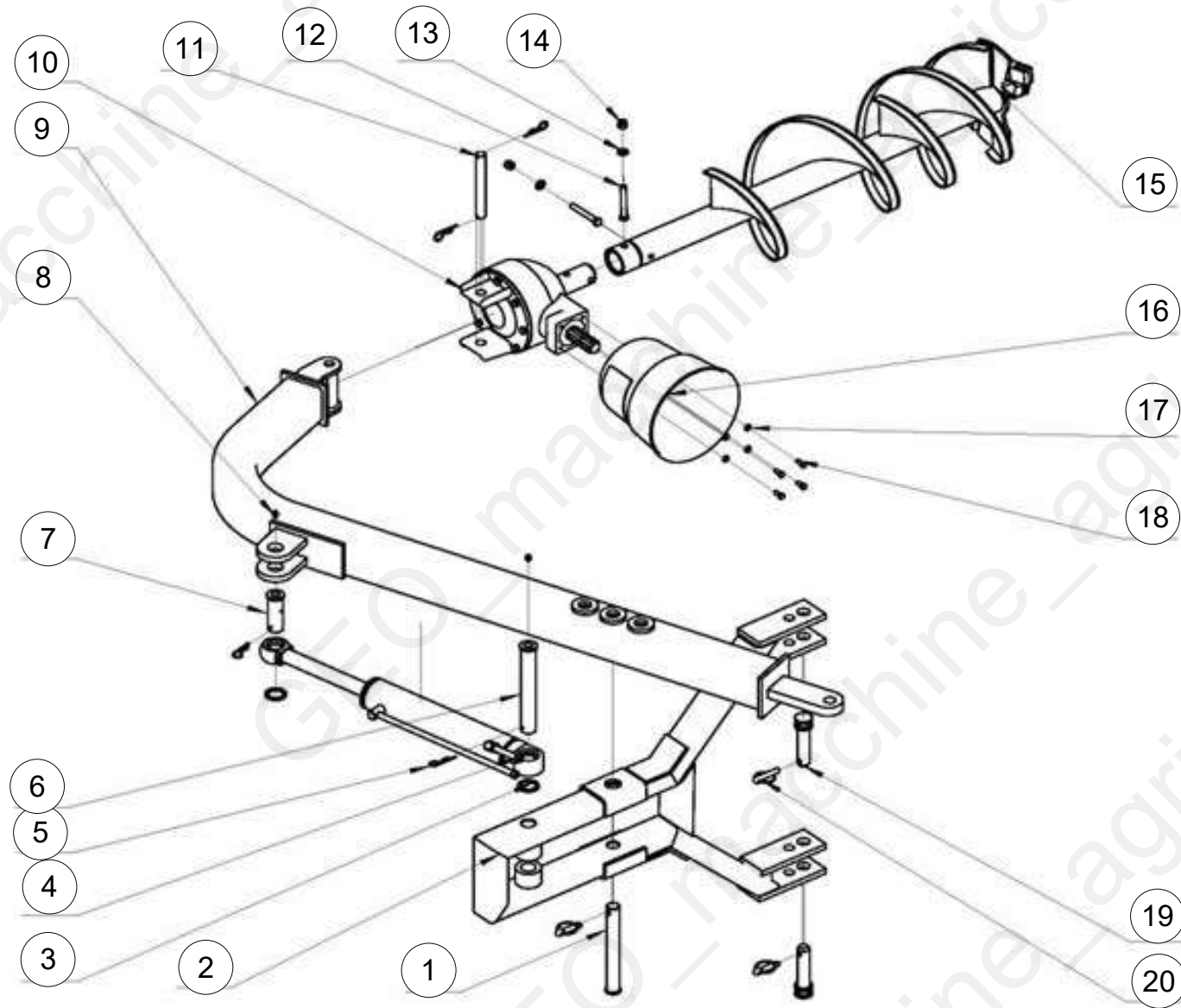
Assembly: Augers



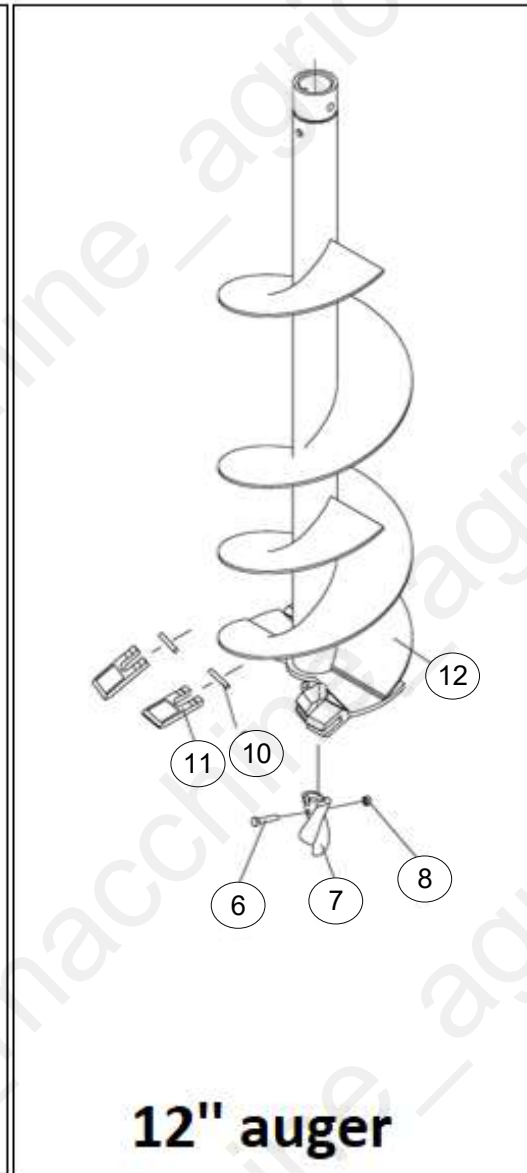
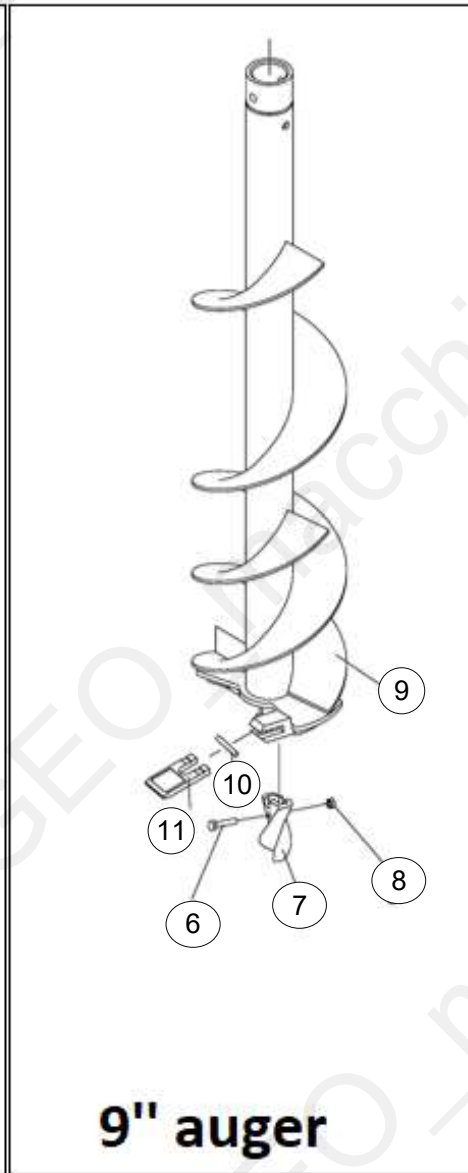
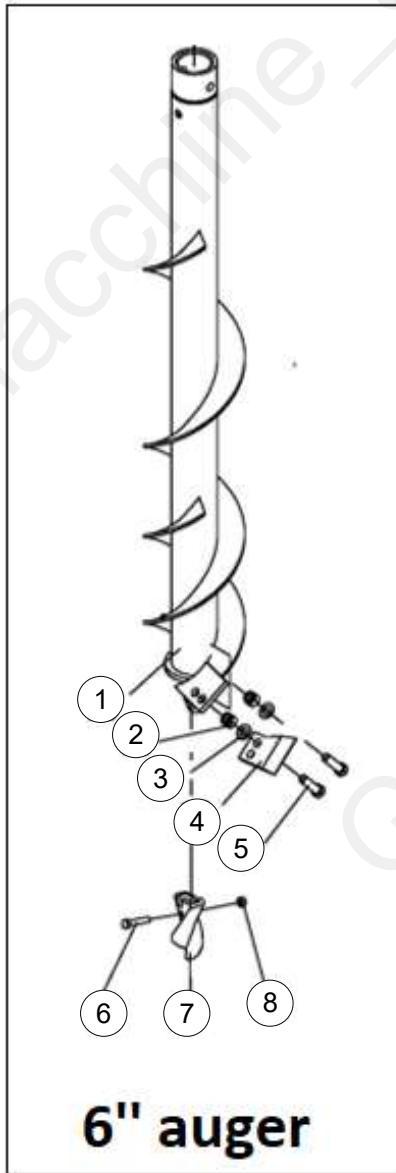
Pos	Code	Description	NOTE	Q.
1	WX-HL-02-001	6" auger weldment		1
2	DIN985-M12	nut M12		4
3	GB97.1-12	plain washer 12		4
4	WX-HL-00-109	6" auger blade		2
5	GB5783-M12X40	bolt M12x40		4
6	GB5783-M8X35	bolt M8x35		1
7	WX-HL-00-108	auger teeth		1
8	DIN985-M8	nut M8		1
9	WX-HL-03-001	9" auger weldment		1
10	WX-HL-00-107	loosing bar		2
11	WX-HL-00-106	blade		2
12	WX-HL-04-001.12	12" auger		1

HMD-HL50





Pos	Code	Description	NOTE	Q.
1	WX-HL-00-102	Mid-mounting pin		1
2	WX-HL-12-001	suspension fork weldment		1
3	WX-HL-00-103	spacer		2
4	LW-6.02.012	cylinder		1
5	ZL-25.104	R pin		4
6	WX-HL-00-105	connecting pin		1
7	WX-HL-00-104	connecting pin		1
8	DIN.71412.AM10.x.1	grease nipple M10		2
9	WX-HL-11-001	frame		1
10	WX-HL-09-001	Gearbox HMDL		1
11	WX-HL50-00-101	gear box pin		1
12	GB/T.5782.M12.x.90	Bolt M12X90		2
13	GB/T.97.1.12	Plain washer 12		2
14	GB/T.889.1.M12	Locknut M12		2
15	WX-HL-04-001.12	12" auger		1
15	WX-HL-04-001.6	6" auger		1
15	WX-HL-04-001.9	9" auger		1
16	WX-HL-13-001	PTO protect hood		1
17	GB/T.97.1.8	Plain washer 8		4
18	GB/T.5783.M8.x.20	M8 x 20 Hexagon bolt		4
19	RB-00.102	upper suspension pin		2
20	200.56.011	Lock pin		3



Machine: HMD-HL50

Assembly: Augers



Pos	Code	Description	NOTE	Q.
1	WX-HL-02-001	6" auger weldment		1
2	DIN985-M12	nut M12		4
3	GB97.1-12	plain washer 12		4
4	WX-HL-00-109	6" auger blade		2
5	GB5783-M12X40	bolt M12x40		4
6	GB5783-M8X35	bolt M8x35		1
7	WX-HL-00-108	auger teeth		1
8	DIN985-M8	nut M8		1
9	WX-HL-03-001	9" auger weldment		1
10	WX-HL-00-107	loosing bar		2
11	WX-HL-00-106	blade		2
12	WX-HL-04-001.12	12" auger		1