

Macchina

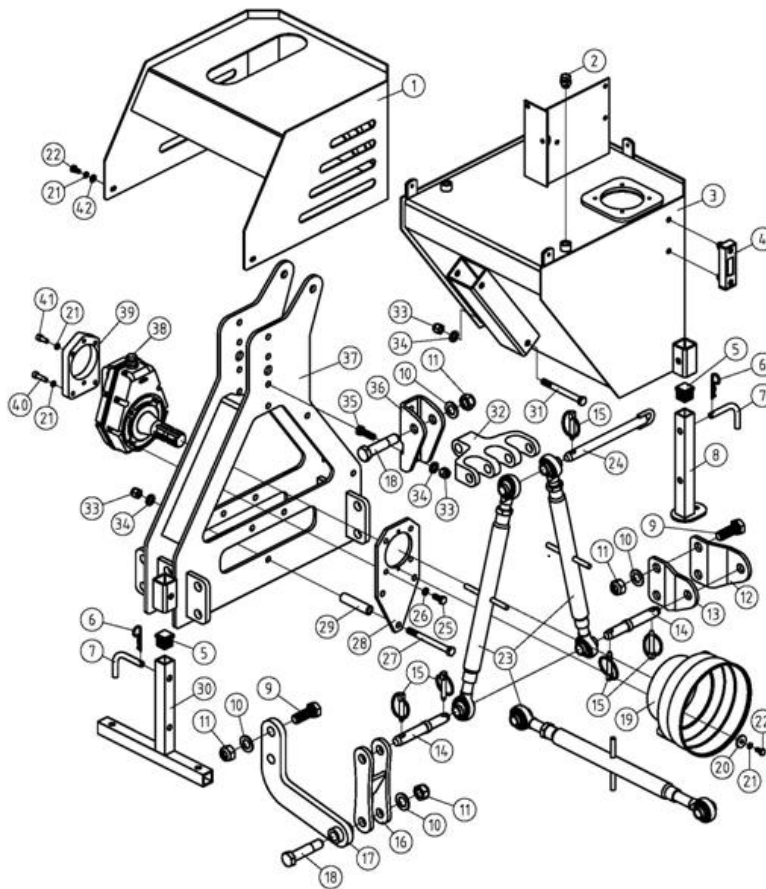
AM



Sezione

1

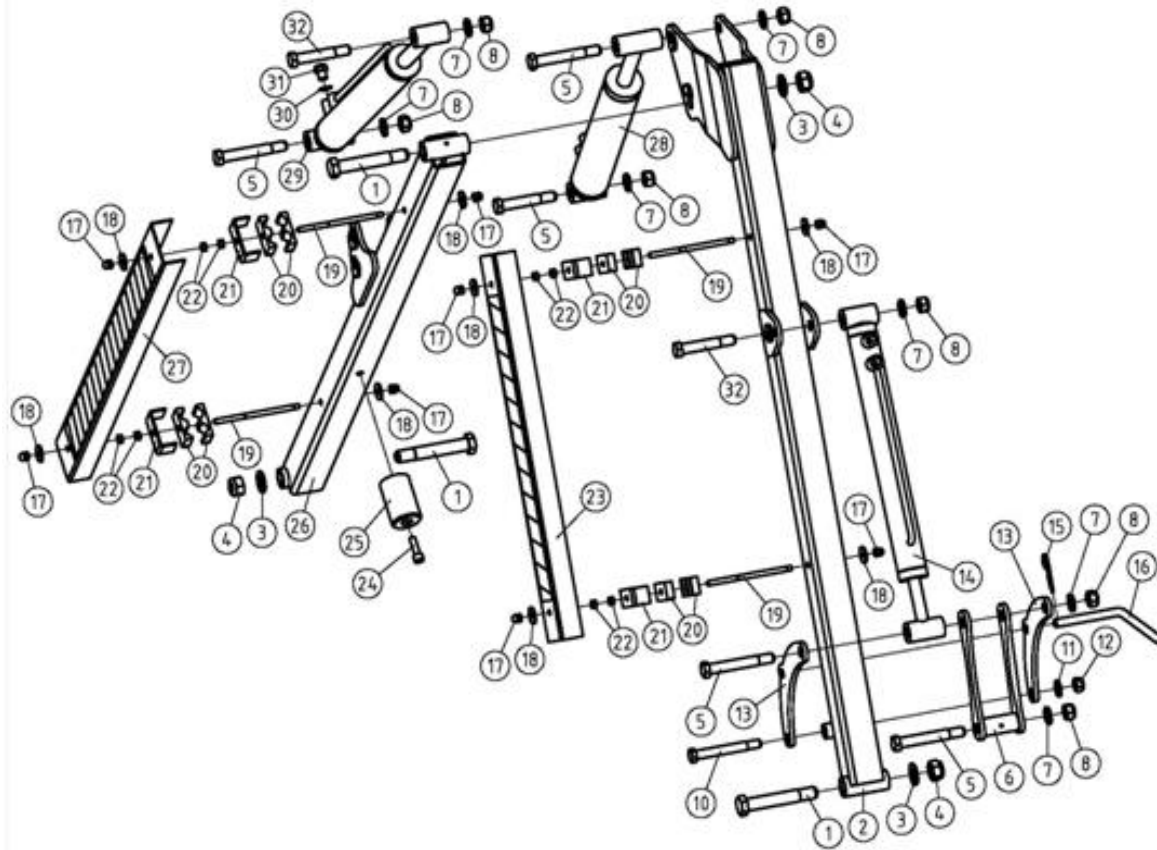
AM\_part1



SerNo	PartNo	Description	Quantity	Price
1	AM60.03.016	Oil tank cover	1	95,80
2	CBW-00-011	Oil plug	2	5,20
3	AM60.03.017Y-1	Oil tank	1	152,40
4	JB7941.2-B80	Oil level	1	18,50
5	EF100.00.117	Rubber cover	3	3,60
6	1G-150-01-142	R pin	4	1,20
7	EF100.00.111A	Support peg	3	3,10
8	AM60.03.018	Bearing foot	2	17,50
9	GB5783-M20X55	Screw M20*55	4	2,90

10	GB97.1-20	Plain washer 20	9	0,40
11	DIN985-M20	Nut M20	9	1,20
12	AM60.03.114	Bottom Mount board A	1	12,40
13	AM60.03.115	Bottom Mount board B	1	12,40
14	AM60.03.113	Pin shaft	2	6,90
15	200.56.011	Lock pin	5	1,50
16	AM60.03.021	Hanging Weldment	1	25,80
17	AM60.03.022	L Shape Plate	1	33,00
18	GB27-M20X95	Screw M20*95	2	2,90
19	FM120.00.199	PTO cover	1	8,20
20	GB96.1-8	Plain washer8	10	0,20
21	GB93-8	Spring washer 8	5	0,20
22	GB5783-M8X16	Screw M8*16	5	0,40
23	AM60.03.020	Adjust plate	3	38,10
24	AM60.03.019	Upper mount board weldment	1	15,50
25	GB5786-M10X1.25X25	Screw M10*25	4	0,40
26	GB93-10	Washer10	4	0,20
27	GB5782-M12X130	Screw M12*130	3	0,40
28	AM60.03.102	Fixed board for gear box	1	17,50
29	AM60.03.101	Sleeve	3	5,80
30	AM60.03.010	Bearing foot	1	29,90
31	GB5782-M12X120	Screw M12*120	2	0,40
32	AM60.03.112	Triple link	1	43,30
33	DIN985-M12	Nut M12	3	0,40
34	GB97.1-12	Plain washer12	8	0,20
35	GB5783-M12X40	Screw M12*40	3	0,50
36	AM60.03.111	Upper mount fram	1	37,10
37	AM60.03.011	Fram weldment	1	128,80
38	AM60.03.012	Multiplier Gearbox	1	303,90
39	AM60.04.102	Outer Support for Pump	1	25,80
40	GB70.1-M8X30	Screw M8*30	2	0,40
41	GB70.1-M8X20	Screw M8*20	2	0,40
42	GB97.1-6	Plain washer 6	4	0,20

AM\_part2



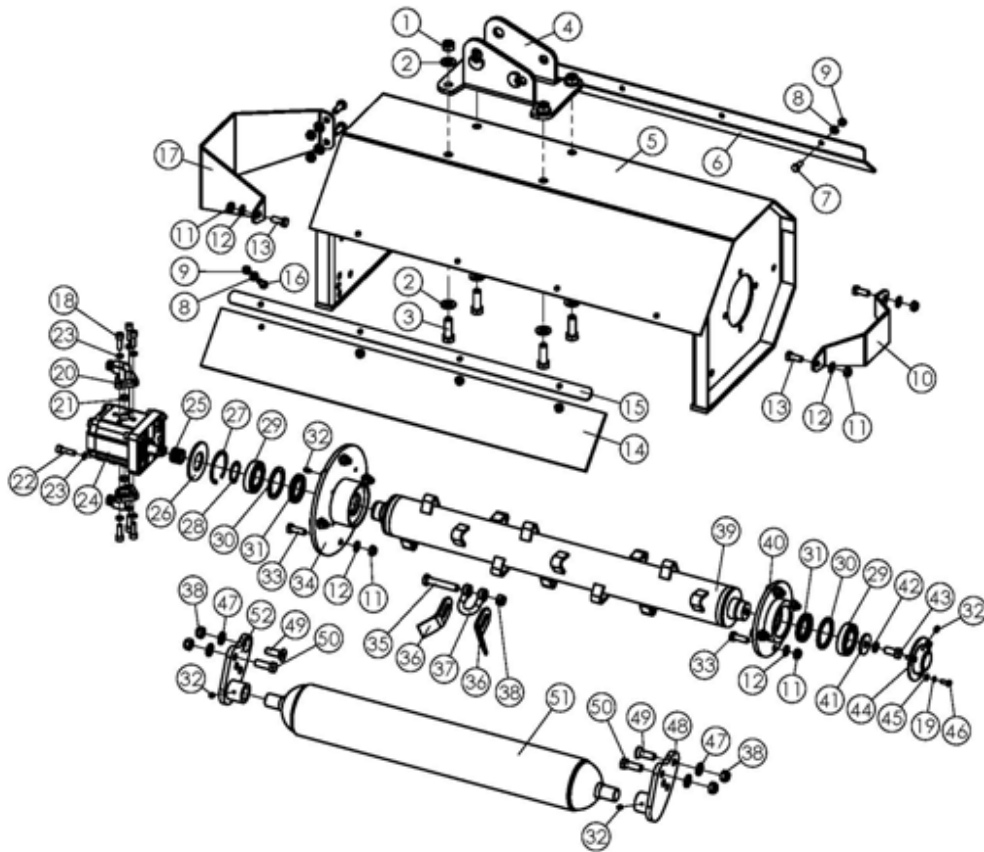
SerNo	PartNo	Description	Quantity	Price
1	GB27-M20X130	Bolt M10X130	3	0,80
2	AM60.03.014	Small arm weldment	1	147,30
3	GB97.1-20	Plain washer	9	0,20
4	DIN985-M20	Nut M20	9	1,20
5	GB27-M16X120	Bolt M16X120	4	1,90
6	AM60.03.013	Push and pull board	1	44,30
7	GB97.1-16	Plain washer	7	0,20
8	DIN985-M16	Nut	7	0,40
10	GB27-M14X120	Bolt	1	1,20
11	GB97.1-14	Plain washer	1	0,20
12	DIN985-M14	Nut	1	0,40
13	AM60.03.103	Swing arm	2	23,70
14	AM60.04.016-1	Swing arm cylinder	1	139,10
15	1G-150-01-142	Small R pin	4	1,50
16	AM60.03.110	Lock pin	1	5,70
17	GB923-M8	Nut M8	8	0,40
18	GB96.1-8	Big plain washer	10	0,20
19	AM60.03.109	Screw	4	5,70
20	AM60-03-105	Cylinder clamp	8	6,70
21	AM60.03.106	Press plate	4	3,30

22	GB6170-M8	Nut M8	8	0,40
23	AM60.03.107	Oil hose cover	1	49,40
24	GB70.1-M10X35	Bolt M10X35	1	0,40
25	AM60.03.104	Cushion	1	12,40
26	AM60.03.015	Large arm weldment	1	100,90
27	AM60.03.108	Oil hose cover	1	37,10
28	AM60.04.023	Cylinder	1	139,10
29	AM60.04.015	Cylinder	1	139,10
30	JB982-14	Combination washer	1	1,20
31	AM60.04.090	Breather	1	3,70
32	GB27-M16X100	Bolt	3	3,60

Sezione

3

AM\_part3



SerNo	PartNo	Description	Quantity	Price
1	DIN985-M14	Nut	4	0,40
2	GB97.1-14	Washer	8	0,20
3	GB5783-M14X40	Bolt	4	0,40
4	AM60.02.017	Linkage weldment	1	55,60
5,1	AM60.02.010	Cover AM 60	1	154,50
5,2	AM80.02.010	Cover AM 80	1	175,10
5,3	AM100.02.010	Cover AM 100	1	195,70

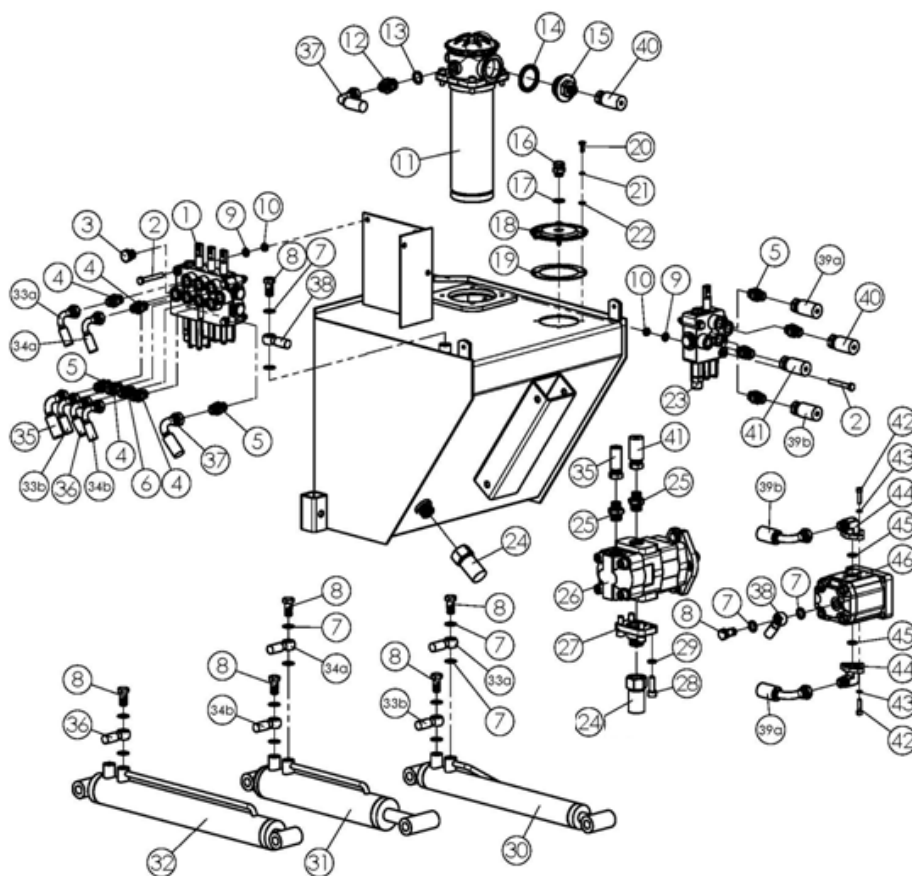
6,1	AM60.02.110	Front cover plate AM 60	1	18,50
6,2	AM80.02.110	Front cover plate AM 80	1	21,60
6,3	AM100.02.110	Front cover plate AM 100	1	24,70
7	GB5783-M8X20	Bolt	4	0,40
8	GB97.1-8	Plain washer	8	0,20
9	DIN985-M8	Nut	8	0,40
10	AM60.02.108	Protect cover	1	26,80
11	DIN985-M10	Nut	13	0,40
12	GB97.1-10	Washer	13	0,20
13	GB5783-M10X25	Bolt	5	0,40
14,1	AM60.02.112	Rubber cover AM 60	1	19,60
14,2	AM80.02.112	Rubber cover AM 80	1	20,60
14,3	AM100.02.112	Rubber cover AM 100	1	21,60
15,1	AM60.02.111	Press plate AM 60	1	12,40
15,2	AM80.02.111	Press plate AM 80	1	14,40
15,3	AM100.02.111	Press plate AM 100	1	16,50
16	GB5783-M8X25	Bolt	4	0,40
17	AM60.02.103	Motor protect cover	1	29,90
18	GB70.1-M8X25	Bolt	6	0,40
19	GB93-6	Spring washer	3	0,20
20	AM60.02.104-2	Motor lingage	2	8,10
21	GB3452.1-G-23.6X2.65	Washer	2	0,20
22	GB70.1-M8X30	Bolt	4	0,40
23	GB93-8	Washer	10	0,20
24	HPLMA220BMLE5E5B00	Hydraulic motor	1	329,60
25	AM60.02.102	key gear engine	1	15,50
26	AM60.02.141	Big Ring Cicle	1	7,20
27	GB893.1-62	Seeger J 62	1	1,50
28	GB894.1-35	Seeger A 35	1	3,10
29	GB276-6007	Bearing 6007	2	23,70
30	AM60.02.105	Small Ring Cicle	2	3,10
31	GB13871-FB-40X55X8	Oil seal circle	2	3,10
32	GB1152-M6	Grease niple	4	0,50
33	GB5783-M10X30	Bolt	8	0,40
34	AM60.02.011	Bearing seat	1	65,90
35	GB5782-M12X60	Bolt	16	0,50
36	AM60.02.106	Blade	32	1,20
37	AM60.02.107	Blade lock	16	1,00
38	DIN985-M12	Bolt	20	0,40
39,1	AM60.02.012	Blade axle AM 60	1	278,10
39,2	AM80.02.012	Blade axle AM 80	1	298,70
39,3	AM100.02.012	Blade axle AM 100	1	329,60

40	AM60.02.013	Bearing seat	1	47,40
41	MZ105.115	Washer	1	0,20
42	GB93-12	Spring washer	1	0,20
43	GB5783-M12X25	Bolt	1	0,40
44	AM60.02.109	End cover	1	12,40
45	GB97.1-6	Plain washer	3	0,20
46	GB5783-M6X16	Bolt	3	0,40
47	GB97.1-12	Washer	4	0,20
48	AM60.02.014	Roller seat L	1	27,80
49	GB70.3-M12X30	Bolt	2	0,50
50	GB5783-M12X35	Bolt	2	0,40
51,1	EFG120.012-AM60	Roller AM 60	1	87,60
51,2	EFG120.012-AM80	Roller AM 80	1	97,90
51,3	EFG120.012-AM100	Roller AM 100	1	108,20
52	AM60.02.016	Roller seat R	1	27,80

Sezione

4

AM\_part4



SerNo	PartNo	Description	Quantity	Price
-------	--------	-------------	----------	-------

1	AM60.04.022Y	Valve	1	329,60
2	GB5782-M8X60	Bolt	5	0,40
3	ZBT32001.3-ZG3/8-19"	Connector	1	3,30

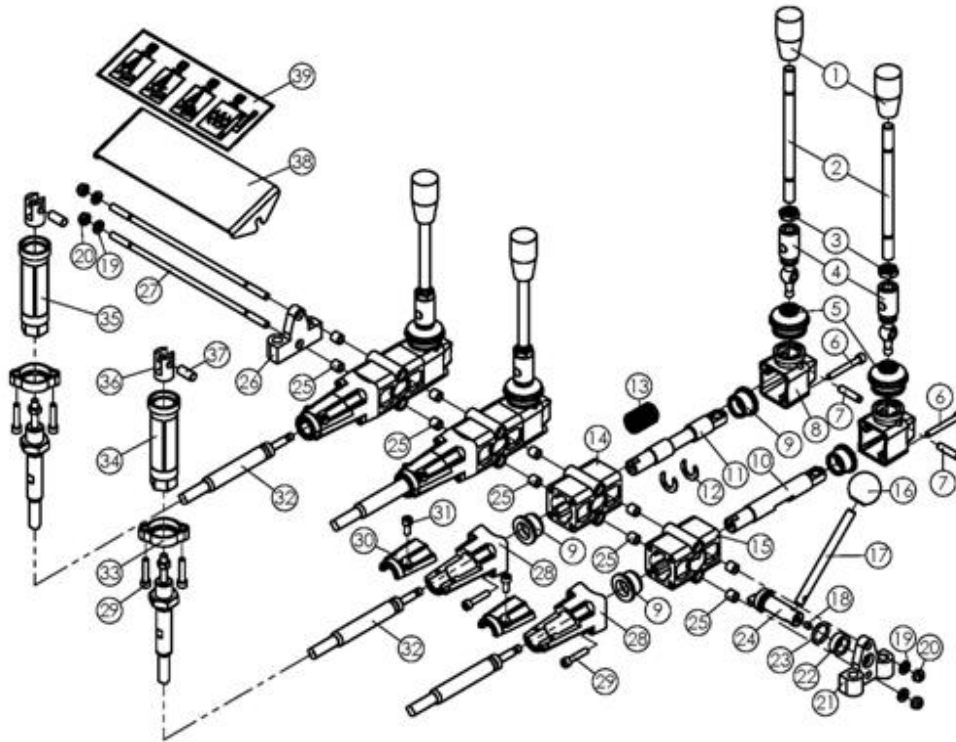
4	MBH-8.08.302Y		3	3,30
5	1CB-18-06WD	Connector	6	3,30
6	MBH-8.08.305Y	Connector	2	3,30
7	JB982-14	Washer	14	0,20
8	GB34541-M14X1.5	bolt	6	5,60
9	GB97.1-8	washer	5	0,20
10	DIN985-M8	nut	5	0,40
11	RFA-100X30L	Oil fiter	1	81,40
12	1CM-18WD	Connector	1	3,30
13	GB3452.1-G-18X2.65	Combination washer	1	1,20
14	JB982-42	Combination washer	1	3,60
15	AM60.04.104-1	Connector	1	9,30
16	CBW-00-011	Connector	1	5,20
17	JB982-16	Washer	1	1,20
18	MBH-8.08.117	Combination washer	1	23,70
19	MBH-8.08.118	Washer	1	2,60
20	GB5783-M6X12	bolt	4	0,40
21	GB93-6	Washer	4	0,20
22	GB97.1-6	nut	4	0,40
23	AM60.04.017Y	Valve	1	164,80
24	AM60.04.011-1	Hydraulic Pipe	1	35,00
25	1CB-18-08WD	Connector	2	3,30
26	CBHY-G25/F4.5-ATP	PUMP	1	401,70
27	AM60.04.101-1	Connector	1	19,60
28	GB70.1-M10X30	Bolt	4	0,40
29	GB93-10	Washer	4	0,20
30	AM60.04.016-1	Cilynder	1	139,10
31	AM60.04.023	Cilynder	1	139,10
32	AM60.04.015	Cilynder	1	139,10
33	AM60.04.020	Hydraulic Pipe	2	29,90
34	AM60.04.018	Hydraulic Pipe	2	27,80
35	AM60.04.025Y	Hydraulic Pipe	1	29,90
36	AM60.04.019	Hydraulic Pipe	1	27,80
37	AM60.04.021Y	Hydraulic Pipe	1	29,90
38	AM60.04.013	Hydraulic Pipe	1	27,80
39	AM60.04.014	Hydraulic Pipe	2	27,80
40	AM60.04.024Y	Hydraulic Pipe	1	29,90
41	AM60.04.012Y	Hydraulic Pipe	1	29,90
42	GB70.1-M8X25	bolt	6	0,40
43	GB93-8	Washer	6	0,20
44	AM60.02.104-2	connector	2	12,40
45	GB3452.1-G-23.6X2.65	Washer	2	0,20



## Sezione

5

## AM\_part5new



SerNo	PartNo	Description	Quantity	Price
1	BH-6.07.091	Handle	4	5,60
2	MBH-6.08.108	Joy sticker	4	12,40
3	GB6172.1-M10	Nut	4	0,40
4	AM60.01.120	Director	4	8,20
5	AM60.01.119	Cover	4	3,60
6	GB70.1-M5X40	Bolt	8	0,50
7	GB119.1-B-6X26	Pin	4	1,20
8	AM60.01.114	Up cover	4	7,20
9	AM60.01.109	Bush	8	5,20
10	AM60.01.118A	Pull pole	1	12,40
11	AM60.01.111A	Pull pole	3	14,40
12	AM60.01.122	Circle	6	0,50
13	AM60.01.110	Spring	3	6,20
14	AM60.01.113	Valve Piece	3	7,70
15	AM60.01.117	Valve Piece with Bolt hole	1	7,70
16	AM60.04.092	Handle	1	5,60
17	AM60.01.107	Lock handle	1	7,20

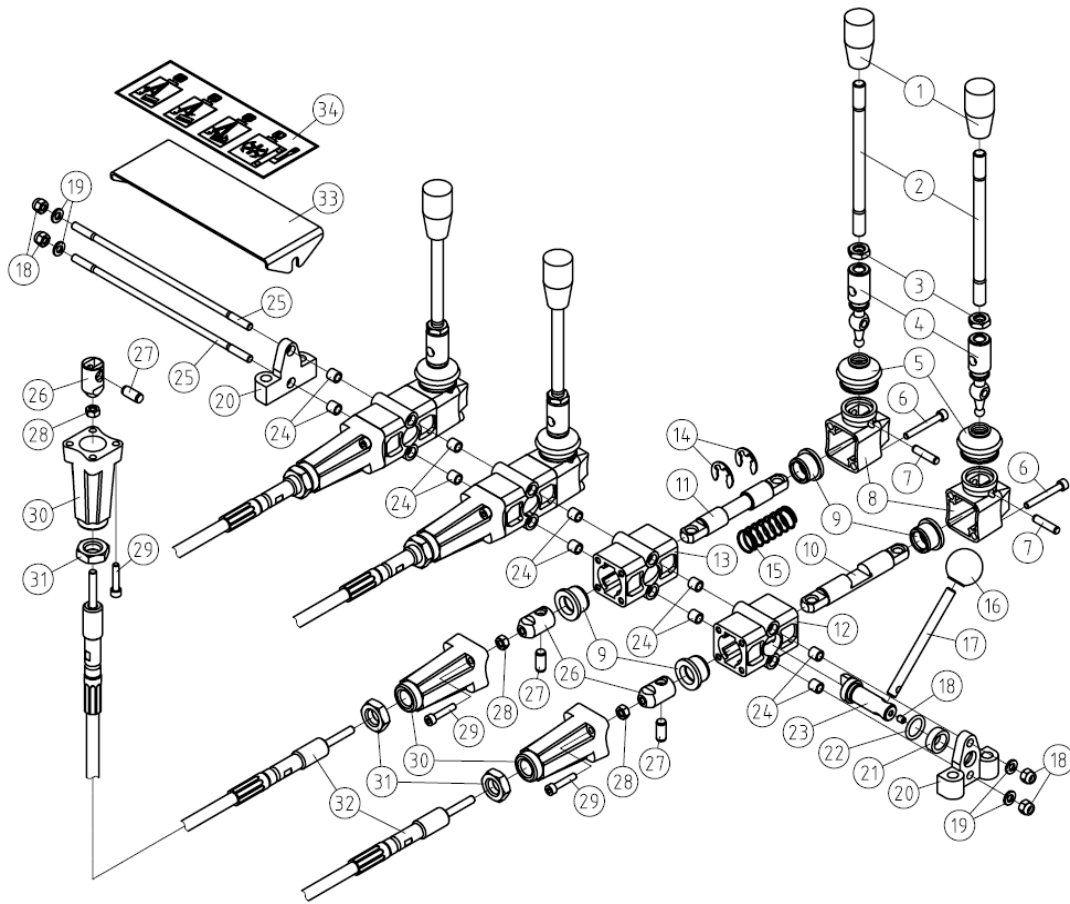


18	GB78-M5X8	Fix seat	1	2,00
19	GB97.1-6	Plain washer	4	0,20
20	DIN985-M6	Nut	4	0,40
21	AM60.01.105	Brush	1	6,60
22	AM60.01.104	O - ring	1	3,30
23	GB3452.1-G-16X2.65	Lock pin	1	1,20
24	AM60.01.106	Lock washer	1	0,20
25	AM60.01.103	Screw	10	0,80
26	AM60.01.102	Brush	1	6,60
27	AM60.01.101	Pin	2	3,60
28	AM60.01.112A	Down cover	4	12,40
29	GB70.1-M5X25	Bolt	16	0,40
30	AM60.01.123A	Up cover	4	7,20
31	GB70.1-M5X12	bolt	8	0,40
32	AM60.01.011A	Cable	4	27,80
33	AM60.01.201	Cable connector	4	15,50
34	AM60.01.202	connector	3	14,40
35	AM60.01.203	connector	1	14,40
36	AM60.01.204	Lock	4	3,60
37	AM60.01.205	Pin	4	0,90
38	AM60.01.115	Sticker plate	1	18,50
39		Sticker	1	3,70

Sezione

6

## AM\_part5old



SerNo	PartNo	Description	Quantity	Price
1	BH-6.07.091	Handle	4	5,60
2	AM60.01.121	Joy sticker	4	12,40
3	GB6172-86	Nut	4	0,20
4	AM60.01.120	Director	4	8,20
5	AM60.01.119	Cover	4	3,60
6	GB70.1-2000	Bolt	8	0,50
7	GB119-86	Pin	4	1,20
8	AM60.01.114	Up cover	4	7,20
9	AM60.01.109	Bush	4	5,20
10	AM60.01.118	Pull pole	1	12,40
11	AM60.01.111	Pull pole	3	14,40
12	AM60.01.117	Valve Piece with Bolt hole	1	7,70
13	AM60.01.113	Valve Piece	3	7,70
14	AM60.01.122	Circle	8	0,50
15	AM60.01.110	Spring	4	6,20
16	AM60.04.092	Handle	1	5,60
17	AM60.01.107	Lock handle	1	7,20
18	GB6182-86	Nut	4	0,20
19	GB97.1-85	Plain washer	4	0,20
20	AM60.01.105	Fix seat	2	6,60

21	AM60.01.104	Brush	1	3,30
22	GB3452.1-82	O - ring	1	3,30
23	AM60.01.106	Lock pin	1	0,20
24	AM60.01.103	Lock washer	10	0,20
25	AM60.01.101	Screw	2	3,60
26	AM60.01.108	Connector	4	5,80
27	GB119-86	Pin	4	0,90
28	GB6170-86	Nut	4	0,40
29	GB70.1-2000	Bolt	8	0,50
30	AM60.01.112	Down cover	4	12,40
31	GB6182-86	Nut	4	0,20
32	AM60.01.011	Cable	4	33,00
33	AM60.01.115	Sticker plate	1	18,50
34		Sticker	1	3,70